



FIRESTOP CENTRE

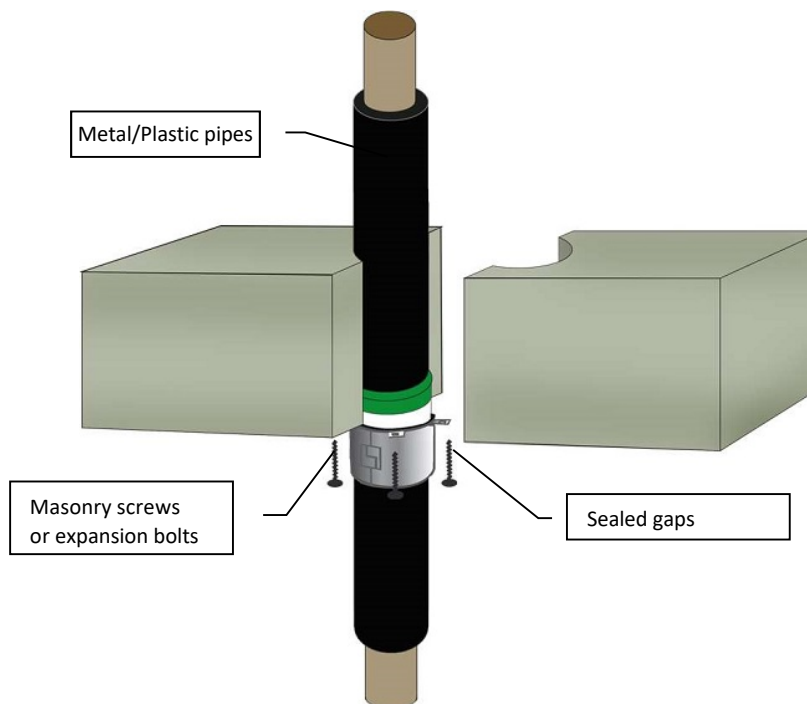
Authorised New Zealand Distributor
Ph (09) 483 4000 www.firestopcentre.co.nz

Protecta FR Collar - Concrete Floor from 100mm Metal or Plastic Pipes with Combustible (Elastomeric) or Non-Combustible Insulation

See Pg 2 for details

Installation Instructions

1. A single pipe collar is installed on the underside of the floor.
2. Before fitting the pipe collar ensure that any gaps between the pipe and the floor slab are sealed. Gaps between the pipe and the floor below 10mm must have 20mm deep stonewool to plug the opening, and for gaps 10mm or above, the seal must be plugged with 10mm deep Protecta® FR Acrylic on 40mm deep backing of stonewool. (Any stonewool, rockwool or mineral wool of density 33kg/m³ is acceptable). Alternatively FR Acrylic to the full depth of the stonewool may be used if more convenient.
3. Place a pipe collar around the pipe and ensure that the fixing lugs are positioned tightly to the surface of the floor so that the fixings can be inserted fully.
4. Where the surface is uneven, apply a sealing bead of Protecta® FR Acrylic between the floor and the pipe collar.
5. Attach the pipe collar with steel screws or fixings that are suitable for the substrate that the pipe collar will be fitted to.
6. On sites where the penetration size is greater than the pipe diameter and/or the pipe is on an angle an oversized collar can be used, i.e. the internal diameter of the collar can be larger than the pipe.
7. For visual integrity gaps between pipe and collar may optionally be sealed with a thin bead of FR Acrylic sealant.



Zero smoke leakage up to 200Pa with 10mm FR Acrylic

warringtonfire

FAS 190125 Pages 92, 6, 8, 9
AS1530.4-2014 AS4072.1-2005

System FC441

Products	Protecta FR Collar Protecta FR Acrylic
Application	Fire stopping of insulated pipes in rigid floors
Construction	Minimum floor thickness of 100mm* and comprise aerated concrete or concrete with a minimum density of 650kg/m ³

Fire & Sound classification

Copper, Steel, Alupex, PE or PP pipes with Elastomeric or mineral wool insulation

See page 2 for details

*FRRs shown are for a 150mm floor. Where the FRR of a thinner floor is less than these ratings then the FR Collar rating must be reduced to the FRR of the floor or use NZAS 3600:2018

Over-sized collars (see pages 9 & 52):

Max pipe size (with Ins)	: 50mm
Max angle	: 45°
Max FRR	: -/120/120
Max collar size	: 160mm
Max average annular space	: 55mm

Sound reduction (seal only)

STC 58



Protecta®

As a part of our policy of on-going product development and testing, we reserve the right to modify, alter or change product specifications without giving notice. All information contained in this document is given in good faith and is provided for guidance only. Any drawings provided are for illustrative purposes only. As Polyseam has no control over the methods or competence of installation and of prevailing site conditions, no warranties, expressed or implied, is intended to be given as to the actual performance of the product mentioned or referred to herein and no liability whatsoever will be accepted for any loss, damage or injury arising from the use of the information given.

For all technical details on the products specified please refer to the technical data sheets that can be found on www.firestopcentre.co.nz

Signed and approved:

Sheet size: A4	Drawn date & no: 28/7/21 R1.1
Scale: NTS	Drawn by: K.B



FIRESTOP CENTRE

Authorised New Zealand Distributor
Ph (09) 483 4000 www.firestopcentre.co.nz

Protecta FR Collar - Concrete Floor from 100mm Metal or Plastic Pipes with Combustible (Elastomeric) or Non-Combustible Insulation

Services	Wall thickness	Collar Height	Collar Size	Insulation Thickness	Classification
Steel or Copper Pipe		Insulation may be combustible Elastomeric or non-combustible mineral wool / rockwool			
Up to 42mm diam	Up to 14.2mm	50mm	Up to 63mm diam	9mm	FRR -/120/120
" "	" "	50mm	Up to 110mm diam	10mm - 50mm	FRR -/60/60
" "	" "	60mm	Up to 160mm diam	" "	FRR -/60/60
Up to 54mm diam	" "	50mm	Up to 110mm diam	19mm	FRR -/120/60
Alupex Pipe					
Up to 75mm diam	Up to 4.6mm	50mm	Up to 110mm diam	9mm	FRR -/120/120
" "	" "	50mm	Up to 110mm diam	10mm - 50mm	FRR -/120/90
" "	" "	60mm	Up to 200mm diam	" "	FRR -/120/90
PE, PE-LD, PE-MD, PE-HD, PE-X, ABS, SAN+PVC and similar					
Up to 160mm diam	Up to 9.5mm	50mm	Up to 110mm diam	9mm	FRR -/180/180
" "	" "	60mm	Up to 200mm diam	"	FRR -/180/180
" "	" "	50mm	Up to 110mm diam	10mm - 50mm	FRR -/120/120
" "	" "	60mm	Up to 200mm diam	" "	FRR -/120/120
" "	" "	75mm	Up to 315mm diam	" "	FRR -/120/120
PP, PP-MV, PP-H, PP-R and similar					
Up to 160mm diam	Up to 9.1mm	50mm	Up to 110mm diam	9mm	FRR -/110/120
" "	" "	60mm	Up to 200mm diam	"	FRR -/110/120
" "	" "	50mm	Up to 110mm diam	10mm - 50mm	FRR -/60/60
" "	" "	60mm	Up to 200mm diam	" "	FRR -/60/60
" "	" "	75mm	Up to 315mm diam	" "	FRR -/60/60

As a part of our policy of on-going product development and testing, we reserve the right to modify, alter or change product specifications without giving notice. All information contained in this document is given in good faith and is provided for guidance only. Any drawings provided are for illustrative purposes only. As Polyseam has no control over the methods or competence of installation and of prevailing site conditions, no warranties, expressed or implied, is intended to be given as to the actual performance of the product mentioned or referred to herein and no liability whatsoever will be accepted for any loss, damage or injury arising from the use of the information given.

For all technical details on the products specified please refer to the technical data sheets that can be found on www.firestopcentre.co.nz

Signed and approved:

warringtonfire

FAS 190125 Pages 92, 6, 8, 9
AS1530.4-2014 AS4072.1-2005

System FC441

Products	Protecta FR Collar Protecta FR Acrylic
Application	Fire stopping of insulated pipes in rigid floors
Construction	Minimum floor thickness of 100mm* and comprise aerated concrete or concrete with a minimum density of 650kg/m ³

Fire & Sound Classification

*FRRs shown are for a 150mm floor. Where the FRR of a thinner floor is less than these ratings then the FR Collar rating must be reduced to the FRR of the floor or use NZAS 3600:2018

Over-sized collars (see pages 9 & 52):

Max pipe size (with Ins)	: 50mm
Max angle	: 45°
Max FRR	: -/120/120
Max collar size	: 160mm
Max average annular space	: 55mm

Sound reduction (seal only) STC 58


Protecta®

Sheet size: **A4**
Drawn date & no: **28/7/21 R1.1**

Scale: **NTS**
Drawn by: **K.B**